

PCBC Data Pack Haywood Hospital

Summary

- **COPD, Diabetes, Dementia, Depression, Hypertension, Obesity Peripheral Arterial Disease and Serious Mental Health Conditions are of high prevalence in the Stoke ANEW locality than of England.**
- **Stoke on Trent has a high number of deprived neighborhoods, performing particularly poorly in GCSE results, violent crime, obesity, smoking, infant mortality and life expectancy.**
- **More appointments at Haywood Hospital are attended by patients from a deprived area than patients from the least deprived areas.**
- **59% of appointments are attended by females, the majority of which are aged 50+, though the Walk In Centre appointments are attended more so by patients under 50 years of age.**
- **The over 70s will see the largest population increase over the next 5 years.**
- **Elderly Care, Neurology, Rehabilitation, Rheumatology and Walk In Centre form the majority of care provided at Haywood hospital.**
- **53% of appointments are attended by patients living within 5 miles of Haywood Hospital. Nearly 20% of appointments are attended by patients over 7.5 miles or outside of Staffordshire.**
- **30% of service users recorded they were married or in a civil relationship. 51% did not state.**
- **Just over 32% stated their religion as either CofE, Roman Catholic or Christian. 61% did not state their religion.**
- **57% of service users stated British as their ethnicity. 40% did not state their ethnicity.**

Haywood Hospital and Area Health Services

The map displays the Haywood Hospital and surrounding area, with various health services marked by colored circles. Callout boxes with photos provide details for several of these services:

- Furlong Medical Centre** (Green circle)
- Tunstall Health Centre** (Green circle)
- Haywood Hospital** (Large green circle)
- Golden Hill MC** (Red circle)
- Whitfield Valley HC** (Red circle)
- Norton Clinic Orchard Surgery** (Red circle)
- Brook Medical Centre** (Red circle)
- Smallthorne HC** (Red circle)
- Burslem HC** (Red circle)
- Middleport MC** (Red circle)

Other locations marked on the map include: Goldsall, Turnstun, Curvet, Whitfield, Ridgeway, Gnoswick, Great Oulton, Whitfield, Balfour, Curstall, Norton Green, Scarfield, Burslem, Smallthorne, Burslem, Smallthorne, Longport, Walsley, and Sney Green.

Services at Haywood Hospital

Bone Densitometry (DEXA)	Limb fitting service / Amputee Rehabilitation /	Rehabilitation Medicine
Cardiology / Heart Failure	Midwives /Obstetric Ultrasound	Rheumatology (including Drug Monitoring)
Day Case Unit	Musculoskeletal Interface Service (MIS)	Speech & Language Therapy
Diabetes	Neurology	Stroke
DVT Clinic	Occupational Therapy	Supportive Therapies
Fracture Liaison Service	Pharmacy	Trauma & Orthopaedics
Geriatric (including Falls and Parkinson's)	Phlebotomy	Walk in Centre
Impact Pain Management	Physiotherapy	Wheelchair Services
INR Clinic	Podiatry	X-Ray

Feedback from the pre-consultation

Haywood
X-ray facilities
Community Beds
Walk-in-Centre
Phlebotomy
Bone Densitometry
GP
Pain Management
Podiatry
Rheumatology
Fracture Clinic
Musculoskeletal Interface Service
Occupational Therapy
Physiotherapy
Amputee Services
Audiology
Maternity
Mental Health
Pharmacy

Most common services in order of prevalence

Changing/improving the delivery/design of local health services

The suggestions made by participants for improving delivery of local health services within Haywood hospital:-

- Have doctors at the walk in centre.
- Doctors in attendance out of hours.
- Match opening times of X-ray service and phlebotomy clinic.
- Phlebotomy could be a drop in clinic or a 'home service' using a portable van.
- Make more services available 7 days a week.
- Re-administer slips/trips/falls beds at hospital.
- Pain services/management could start with a telephone consultation.
- Could move podiatry out of the local area but still needs to be accessible.
- Need a hydrotherapy pool with open access to all.
- Care home matron that attends care homes and SSOTP provide services there.
- Join up services so that patients do not have to travel to different sites i.e., Meir for a blood test and either Leek or Haywood for an X-ray.

Changing/improving the delivery/design of local health services (2)

The options that the public suggested for improving delivery of local health services within Haywood hospital:-

- A link with local Health Centres in order to promote services. Where health centres are appointment based services it would be a benefit to know how we can support each other without having to work through the GP's for each referral.
- Advertise what services are provided.
- Services for chronic conditions need to be in the community.
- Certain conditions need centralised care in larger centres, i.e. stroke, heart attack, orthopaedic, trauma. Other conditions are more suited smaller, more local, units.
- More services to be located/rotated round GP centres. Keep this service in one place - small and friendly not huge and frightening.
- Consider using community hospitals for different specialisms.
- Each area could have a specialist.
- If each area had a specialist service, you could work with local Government to organise bus services.
- Be mindful of bus routes when planning services.
- Create bus routes for the services.
- Transport options for people who do not have access to care i.e. direct bus service.

Changing/improving the delivery/design of local health services (3)

The options that the public suggested for improving delivery of local health services within Haywood hospital:-

- Car parking needs to be considered.
- Better explanations of the community beds within care homes need to be given to help elderly patients understand the situation.
- The right care for people with dementia is needed. A 15-minute check is not long enough and there are not enough staff.
- Take into account dementia centre of excellence, need to have access to all professions. Mental health is integral to care.
- Offer the opportunity for Keele University medical students to train at Leek.
- Keep the NHS as the NHS - not a business.
- Plans need to be in place before the beds are closed.
- Consultation with staff is vital.
- Reduce barriers to the public by understanding lay people.

Health Profile

Stoke on Trent Unitary Authority

Life Expectancy at birth in Stoke is **76.4 years (males)** and **81.0 years (females)** Both are lower than the regional and England average. The rate of **Infant mortality was the highest in England** (period 2013-15).

22.7% of children in Y6 in Stoke are obese, higher than England average of 19.8%

Despite a younger population only **48%** of adults report they are **physically active** compared with 57% for England

7.6% of adults in Stoke were recorded as having **diabetes** in 2014/15 (England – 6.4%). **Latest QOF data for 2016/17 shows prevalence has increased to 7.95% (18,223 people)**

The rate of admissions for **alcohol-related harm in Stoke is high at 1,058 admissions per 100,000 people**. The England rate is 647 per 100,000. The rate of increase in admissions is much higher in Stoke than in England or West Midlands over the period 2008/09 to 2015/16 (**23.7% increase in rate of alcohol related admissions in Stoke, 8.5% in West Midlands and 6.8% in England**)

Self harm rates increased substantially in Stoke between 2012/13 and 2015/16.

20.3% of adults in Stoke smoke. The England average is 15.5%

Disease Prevalence of Stoke ANEW Locality

Conditions with a higher prevalence than Stoke on Trent and England

- Serious Mental Health Conditions

Conditions with a higher prevalence than England

- Hypertension
- Peripheral Arterial Disease
- COPD
- Obesity
- Diabetes
- Dementia
- Depression
- Learning Disabilities
- Epilepsy
- Mental Health

Conditions with a lower prevalence than England

- Atrial Fibrillation
- Chronic Kidney Disease
- Cancer

Deprivation

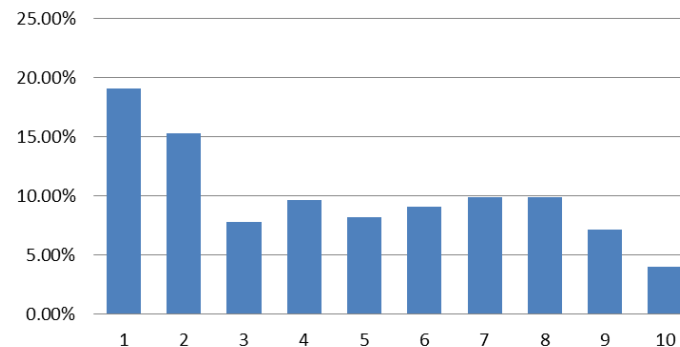
Stoke on Trent Unitary Authority

Compared with benchmark Better Similar Worse Not Compared

Indicator	Period	Stoke		Region England		England		Range	Best
		Recent Trend	Count	Value	Value	Value	Worst		
Deprivation score (IMD 2015)	2015	-	-	34.4	-	21.8	42.0		5.7
Children in low income families (under 16s)	2014	↓	14,350	27.9%	23.5%	20.1%	39.2%		7.0%
Statutory homelessness	2016/17	↑	151	1.4	1.1*	0.8	9.6		0.0
GCSEs achieved	2015/16	-	1,211	48.4%	54.8%	57.8%	44.8%		74.6%
Violent crime (violence offences)	2015/16	↑	8,556	34.1	17.0	17.2	36.7		6.7
Long term unemployment	2016	↓	788	5.0*	6.3*	3.7*	13.8		0.7
Smoking status at time of delivery - current method	2016/17	↓	663	20.0%	11.8%	10.7%	28.1%		2.3%
Smoking status at time of delivery - historical method	2016/17	↓	663	19.3%	11.4%*	10.5%	28.1%		2.3%
Breastfeeding initiation	2014/15	↓	1,734	48.4%	66.8%	74.3%	47.2%		92.9%
Obese children (Year 6)	2016/17	↑	683	24.5%	22.4%	20.0%	29.2%		11.3%
Hospital stays for alcohol-specific conditions (under 18s)	2013/14 - 15/16	-	58	34.7	32.6	37.4	115.1		10.8
Under 18 conceptions	2015	↓	111	26.9	23.7	20.8	43.8		5.7
Smoking prevalence in adults	2016	-	-	20.3%	15.4%	15.5%	24.2%		7.4%
Percentage of physically active adults - current method	2015/16	-	-	57.5	62.5	64.9	53.9		73.7
Percentage of physically active adults - historical method	2015	-	-	48.2%	55.1%	57.0%	44.8%		69.8%
Excess weight in Adults - current method	2015/16	-	-	66.9%	63.9%	61.3%	73.4%		42.7%
Excess weight in adults - historical method	2013 - 15	-	-	68.5%	66.8%	64.8%	76.2%		46.5%
Cancer diagnosed at early stage	2015	-	499	48.6%	52.1%	52.4%	41.6%		60.4%
Hospital stays for self-harm	2015/16	-	923	361.2	208.9	196.5	635.3		55.7
Hospital stays for alcohol-related harm	2015/16	-	2,494	1,058	728	647	1,163		390
Recorded diabetes	2014/15	↑	16,987	7.6%	7.3%	6.4%	8.9%		3.7%
Incidence of TB	2014 - 16	-	89	11.8	12.7	10.9	69.0		1.3
New sexually transmitted infections (STI)	2016	↑	1,008	624	686	795	3,288		344
Hip fractures in people aged 65 and over	2015/16	-	281	708	619	589	820		391
Estimated dementia diagnosis rate (aged 65+)	2017	-	2,466	84.0%	65.6%	67.9%	53.8%		90.8%
Life expectancy at birth (Male)	2013 - 15	-	-	76.4	78.7	79.5	74.3		83.4
Life expectancy at birth (Female)	2013 - 15	-	-	81.0	82.7	83.1	79.4		86.4
Infant mortality	2014 - 16	-	83	7.9	6.0	3.9	7.9		1.6
Killed and seriously injured on roads	2013 - 15	-	137	18.2	33.9	38.5	74.0		11.8
Suicide rate	2014 - 16	-	57	8.9	10.0	9.9	18.3		6.1
Smoking related deaths	2014 - 16	-	1,505	393.0	270.7	272.0	499.3		162.5
Under 75 mortality rate: cardiovascular	2014 - 16	-	567	91.7	78.0	73.5	141.3		45.6
Under 75 mortality rate: cancer	2014 - 16	-	1,055	170.8	141.9	136.8	195.3		100.0
Excess winter deaths	Aug 2013 - Jul 2016	-	357	15.4	18.3	17.9	28.9		7.4

Haywood Hospital Service Use

Service Use by Deprivation Decile



Deprivation Decile Measures

- 1 = Most Deprived Areas
- 10 = Least Deprived Areas

Stoke on Trent significantly worst in

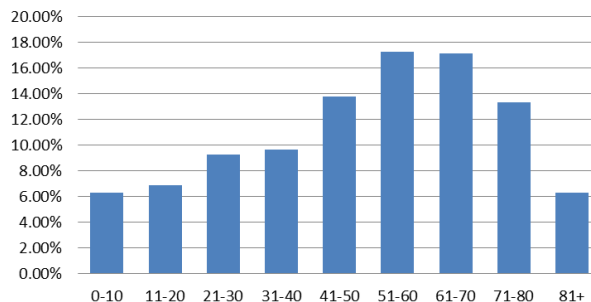
- GCSEs
- Violent Crime
- Breastfeeding
- Obesity
- Hospital Stays for Self Harm
- Physical Activity
- Smoking
- Infant Mortality
- Life Expectancy (Male and Female)

Demographics

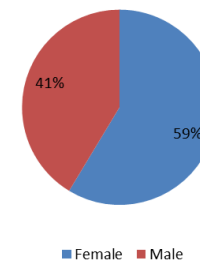
Stoke ANEW Locality Registered Population

Practice Code	Practice Name	List Size
M83021	Furlong Medical Centre	9894
M83075	Norfolk Street Surgery	8161
M83102	Potteries Medical Centre	4577
M83123	Birches Head Medical Centre	6871
M83127	Cobridge Surgery	4675
M83143	Goldenhill Medical Centre	4504
M83623	Snowhill Medical Centre	4473
M83624	Cambridge House Surgery	2624
M83650	Dr Bose & Partner	2468
M83669	Dr Sonnathi's Surgery	4490
M83682	Lucie Wedgwood Medical Centre	5945
M83700	Five Towns Medical Practice	3915
M83739	Packmoor Medical Centre	3666
Y02867	Middleport Medical Centre	2677
Y02868	Hanley Health & Wellbeing Centre	3563
Total		72503

Age of Service Users



Gender of Service Users



Population Projections CCG Level

Percentage Change (2017-2022)



- Stoke ANEW Locality has a registered GP population of circa 72,500 patients.
- The Age of patients accessing services at Haywood Hospital is generally over 50 year olds.
- More Females than Males access services at Haywood Hospital.
- The population of North Staffordshire will increase by almost 9,000 in people aged 70+ by 2022.

Service Utilisation at Haywood Hospital

Utilisation Activity of Services (Data Received)

Delivery	Service	2016				2017				Grand Total	
		Qtr1	Qtr2	Qtr3	Qtr4	Qtr1	Qtr2	Qtr3	Qtr4		
Elective	Day Case Admission : Clinical Haematology		96	94	102	93	101	102	74	662	
	Day Case Admission : CLINICAL ONCOLOGY (Previously RADIOTHERAPY)		53	39	47	28	35	44	16	262	
	Day Case Admission : Geriatric Medicine					197	155			352	
	Day Case Admission : Rehabilitation		199	201	210		76	223	134	1043	
	Day Case Admission : Rheumatology		808	698	705	713	686	698	484	4792	
	Ordinary admission : Acute Internal Medicine				3	3	2			8	
	Ordinary admission : Cardiology				1					1	
	Ordinary admission : Clinical Haematology		1			2	6			9	
	Ordinary admission : CLINICAL ONCOLOGY (Previously RADIOTHERAPY)					1	1	1		3	
	Ordinary admission : Endocrinology				2					2	
	Ordinary admission : Geriatric Medicine		348	306	270	70	104	203	124	1425	
	Ordinary admission : Neurology		21	15	31	23	17	20	26	153	
	Ordinary admission : Paediatrics							1		1	
	Ordinary admission : Rehabilitation		79	68	77	253	157	66	38	738	
	Ordinary admission : RESPIRATORY MEDICINE (Also Known As Thoracic Medicine)			2	1					3	
	Ordinary admission : Rheumatology		65	59	53	56	63	39	26	361	
	Ordinary admission : Trauma & Orthopaedics				1					1	
Regular night admission : Rheumatology				1	9	1	1		12		
Elective Total			1670	1488	1501	1447	1402	1398	922	9828	
Outpatient	Trauma & Orthopaedics		56	34	28	44	23	43	30	297	
	Cardiology					85	3			88	
	Neurology		20	98	104	46		16	89	373	
	Physiotherapy		5	2	3					10	
	DEXA Scans			1120	1280	1225	1107	1195	1503	8387	
	Drug Monitoring			4701	4771	4644	4529	4413	4066	30103	
	Geriatric			89	55	97	82	57	68	523	
	Geriatric - Falls			68	37	32	38	25	40	13	253
	Geriatric - Parkinsons			22	23	23	23	26	28	21	166
	IMPACT			294	181	281	172	197	241	219	1585
	Musc Interface Service			3283	3717	3125	3058	3527	4132	2784	23626
	Neurology - PP						59	108	94	67	328
	PBR - Outpatients - Fracture Liaison			323	301	410	240	305	412	261	2252
	Rehab (Therapies)			756	675	473	520	550	533	401	3908
	Rehab Main Specialty			395	311	292	345	337	408	269	2357
	Rheum (Therapies)			3829	3388	3648	3118	3027	2919	1840	21769
	Rheum Main Specialty			3736	3543	4043	4426	4486	4542	3345	28121
Rheum Non Face to Face Ops			150	138	72		97	362	72	891	
Stroke			37	48	27	38	29	26	28	233	
Outpatient Total		81	18937	18603	18567	17781	18422	19429	13450	125270	
Walk In Centre	Haywood WIC		13426	13367	12808	11799	12584	12166	7550	83700	
Walk In Centre Total			13426	13367	12808	11799	12584	12166	7550	83700	
Grand Total		81	34033	33458	32876	31027	32408	32993	21922	218798	

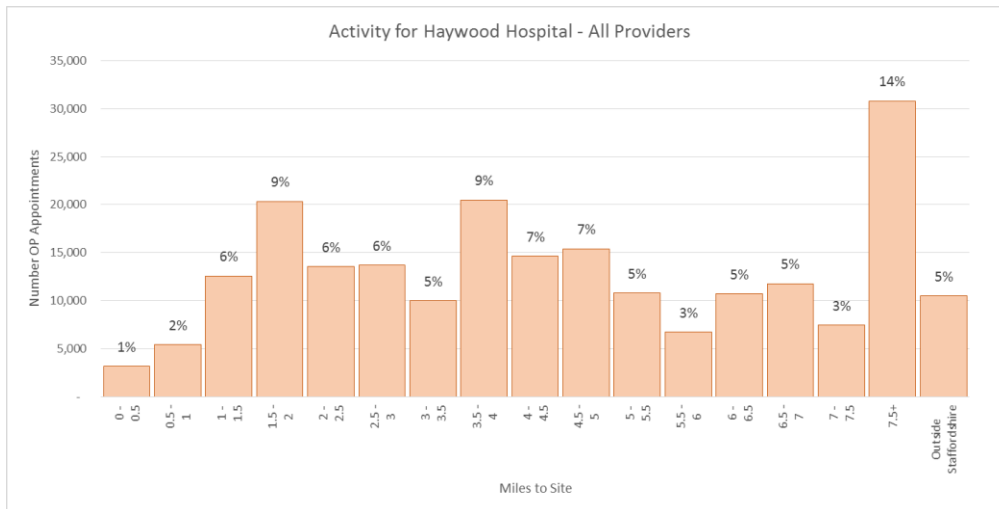
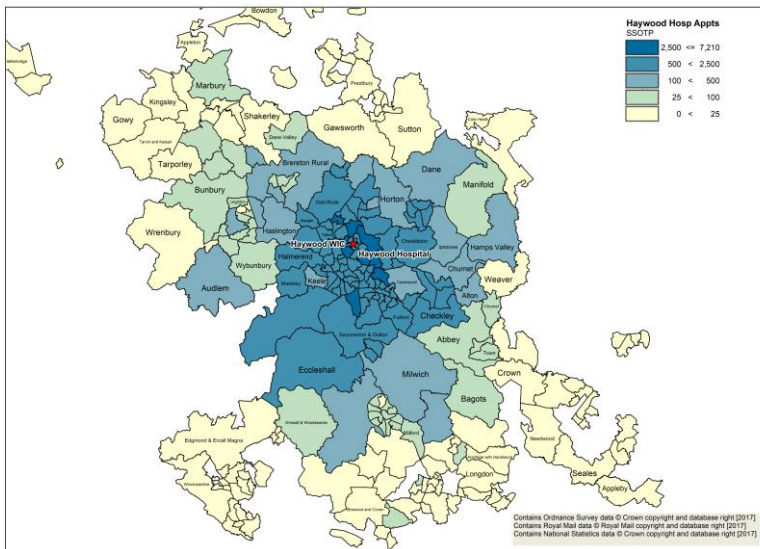
Service Utilisation at Haywood Hospital

Services where no Data Received

Diabetes
DVT Clinic
Heart Failure Clinics
INR
Limb Fitting Service
Midwives Clinics
Occupational Therapy
Occupational Therapy
Phlebotomy
Physio
Podiatry
Speech and Language Therapy (SALT)
Supportive Therapies
Wheelchair Services
Xray

Travel Analysis

Service User Travel Distance



- A wide distribution of miles travelled for appointments at Haywood Hospital is expected due to the Walk In Centre facilities available, being utilised by patients across the city.
- 54% of patients using the Non Emergency Patient Transport Service to Haywood Hospital are within 5 miles.
- 90% of patients using the Non Emergency Patient Transport Service to Haywood Hospital are within 10 miles.

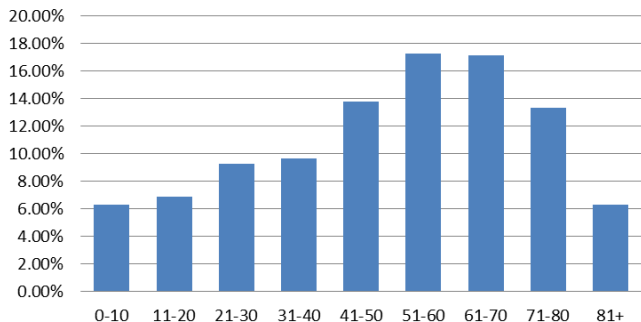
Travel Analysis

Patient Transport Services Patient Distance Travel

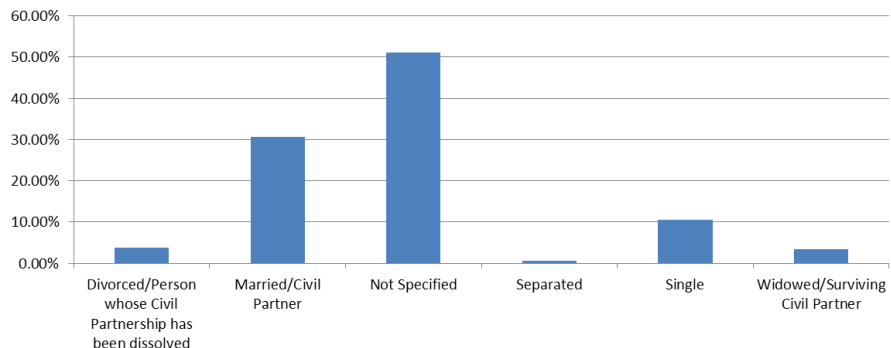
Service	0-5	6-10	11-15	16-20	21-25	26-30	31-35	36-40	51+	Total
Arthritis Clinic	100%	0%	0%	0%	0%	0%	0%	0%	0%	100%
Bone Densitometry	42%	42%	16%	0%	0%	0%	0%	0%	0%	100%
Broadfield Ward	60%	40%	0%	0%	0%	0%	0%	0%	0%	100%
Chatterley Ward	25%	75%	0%	0%	0%	0%	0%	0%	0%	100%
Dale Hall Ward	100%	0%	0%	0%	0%	0%	0%	0%	0%	100%
Day Case Unit	40%	20%	0%	0%	0%	0%	20%	20%	0%	100%
Diabetes	100%	0%	0%	0%	0%	0%	0%	0%	0%	100%
Diabetic Clinic	100%	0%	0%	0%	0%	0%	0%	0%	0%	100%
FALLS Team	33%	50%	17%	0%	0%	0%	0%	0%	0%	100%
Grange Ward	56%	26%	11%	0%	0%	0%	0%	0%	7%	100%
Hydro Unit	17%	83%	0%	0%	0%	0%	0%	0%	0%	100%
IMPACT Pain Service	100%	0%	0%	0%	0%	0%	0%	0%	0%	100%
Jackfield Ward	50%	50%	0%	0%	0%	0%	0%	0%	0%	100%
Limb Fitting Clinic	59%	34%	4%	1%	2%	0%	0%	0%	0%	100%
Musculo Skeletal Clinic	60%	24%	8%	0%	0%	0%	8%	0%	0%	100%
Neurology	74%	17%	9%	0%	0%	0%	0%	0%	0%	100%
Occupational Therapy	81%	14%	5%	0%	0%	0%	0%	0%	0%	100%
Orthopaedic	53%	40%	7%	0%	0%	0%	0%	0%	0%	100%
Outpatients	58%	29%	5%	5%	1%	0%	2%	0%	0%	100%
Parkinsons Care	100%	0%	0%	0%	0%	0%	0%	0%	0%	100%
Physiotherapy	52%	34%	8%	2%	0%	0%	4%	0%	0%	100%
Podiatry	50%	50%	0%	0%	0%	0%	0%	0%	0%	100%
Rehabilitation	53%	33%	6%	3%	0%	0%	5%	1%	0%	100%
Rheumatology	49%	37%	7%	3%	2%	0%	1%	0%	0%	100%
Scotia Day Unit	43%	42%	8%	1%	0%	0%	3%	2%	0%	100%
Scotia Ward	43%	48%	4%	4%	0%	0%	0%	0%	0%	100%
Sneyd Ward	0%	100%	0%	0%	0%	0%	0%	0%	0%	100%
Spinal Clinic	25%	50%	0%	25%	0%	0%	0%	0%	0%	100%
Stroke Clinic	53%	42%	5%	0%	0%	0%	0%	0%	0%	100%
Wainwright Geriatric Medicine	0%	100%	0%	0%	0%	0%	0%	0%	0%	100%
Walk In Centre - 73500	33%	67%	0%	0%	0%	0%	0%	0%	0%	100%
Wheelchair Services	59%	35%	6%	0%	0%	0%	0%	0%	0%	100%
Whitefield Unit	50%	40%	3%	7%	0%	0%	0%	0%	0%	100%
Xray	68%	29%	2%	0%	0%	0%	1%	0%	0%	100%
Grand Total	54%	36%	6%	2%	1%	0%	2%	0%	0%	100%

Equality

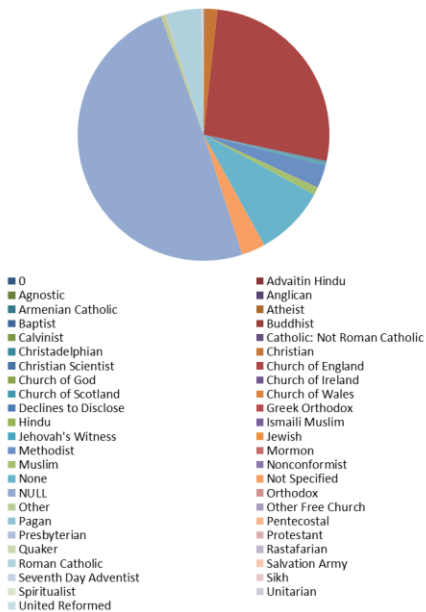
Age of Service Users



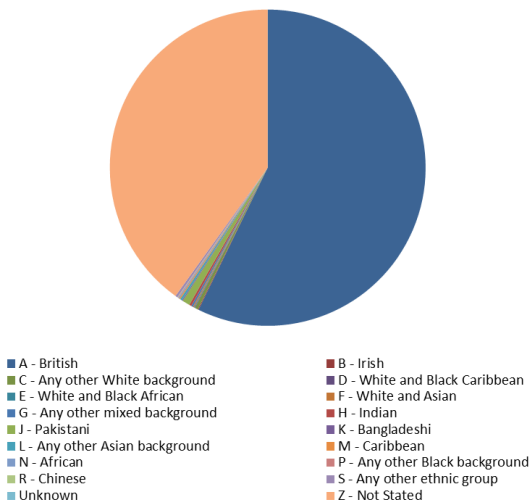
Marriage/Civil Partnership of Service Users



Religion of Service Users



Ethnicity of Service Users



Gender of Service Users

